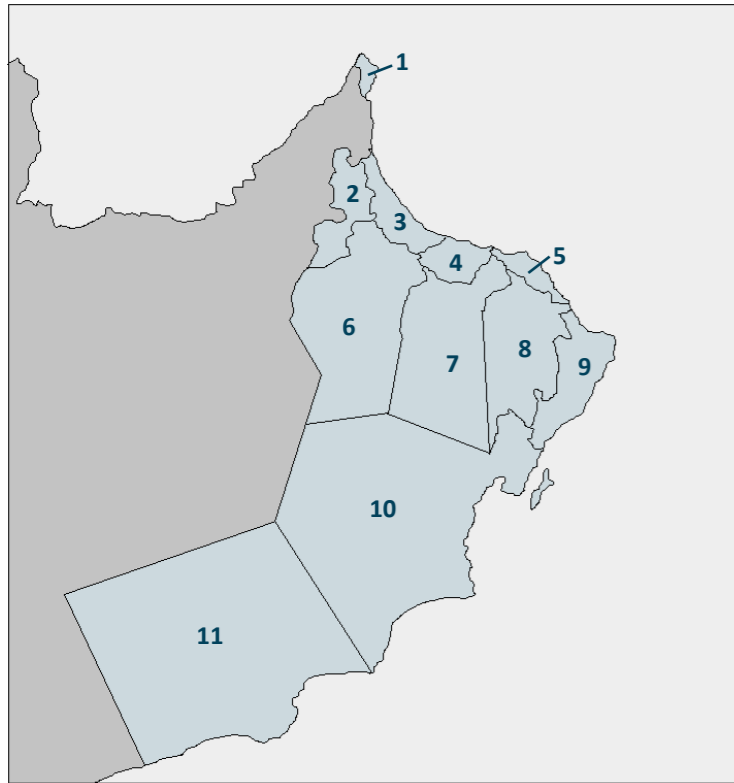


Development and Spatial Differences in Oman

Using GIS to find patterns and relationships



The Sultanate of Oman is split into eleven Governorates:

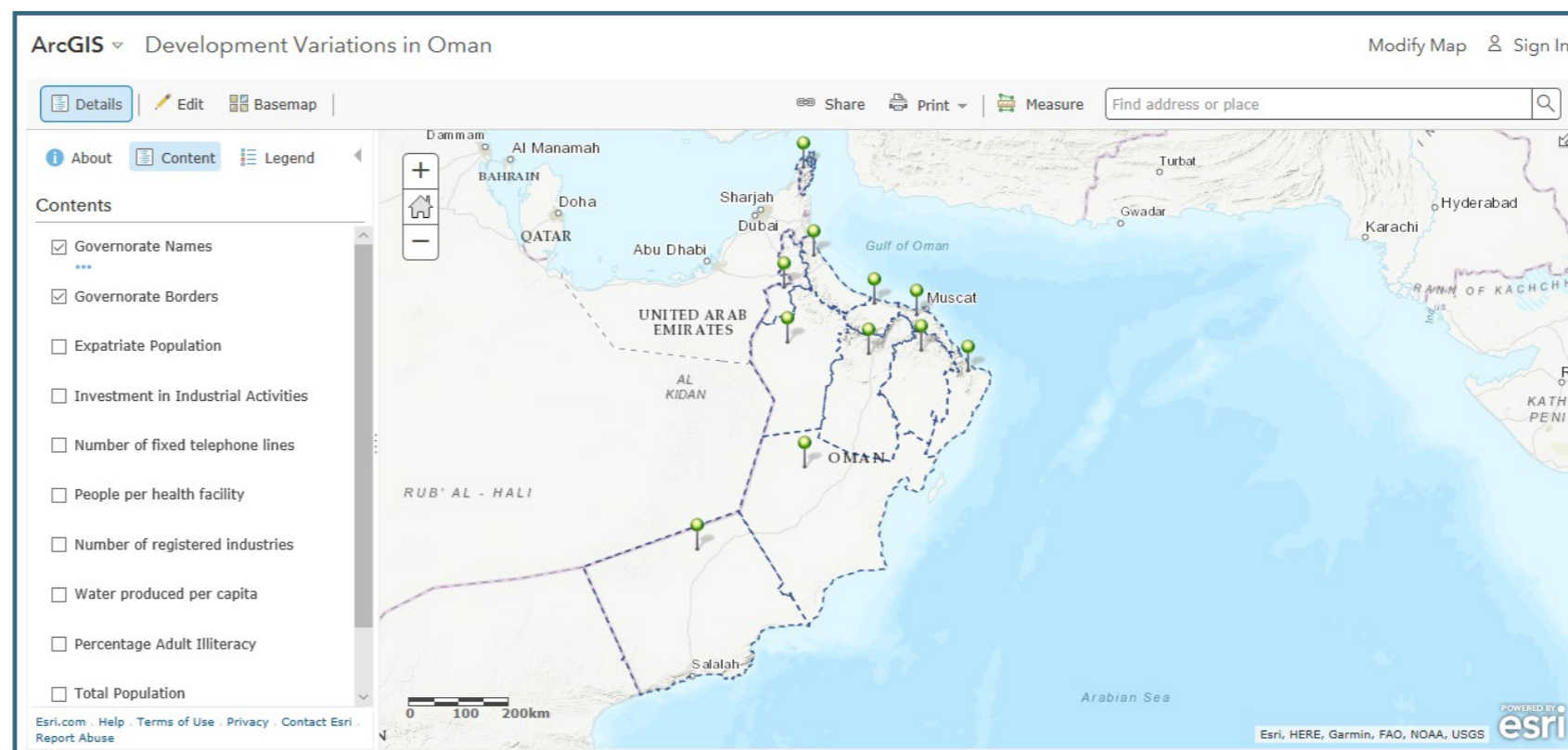
1. Musandam
2. Al Buraimi
3. Al Batinah North
4. Al Batinah South
5. Muscat
6. Ad Dhahirah
7. Ad Dakhiliyah
8. Ash Sharqiyah North
9. Ash Sharqiyah South
10. Al Wusta
11. Dhofar

How do different forms of development vary across the Governorates of Oman?

Open the RGS-IBG 'Development Variations in Oman' ArcGIS map

You can do this by scanning the **QR code** in the bottom right hand corner of this poster or by going to www.arcgis.com/home/index.html and searching for 'Development Variations in Oman' map. Open the map in Map Viewer.

Select '**Content**' - here you will see a wide variety of different layers of data that can be projected onto the map by checking or unchecking the boxes next to them.



More than one layer can be projected at a time. This will allow you to compare the sets of data with each other.

Are there some governorates which appear to score low levels of development in all categories?

Are there some governorates which show high levels of development in all categories?

What geographical reasons might there be for the variations you see?

What problems can you see with the nature of the data that has been selected for use?

What other data sets might be useful to carry out such a study of development variations?

